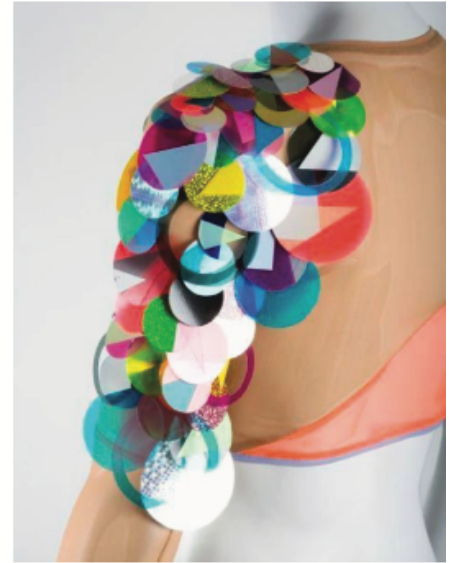


Design 1: Shrug

Each participant will bring their own t-shirt that they are willing to cut. Embellishments and lights will be added in the workshop. See example photos below:



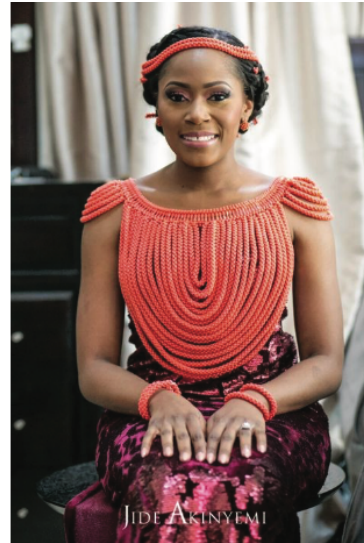
Design 2: Necklace/Breastplate

Each participant will create their own necklace or breastplate, and embellish with jewels, fabrics, and other materials including lights. See example photos below:



Design 3: Tubular

Each participant can create a shape of their choice using tubular materials to create this costume piece which will hold lights that can be added right before the parade. See example photos below:



Design 4: Sunglasses

Each participant will embellish sunglasses with crafting materials and lights. See example photos below:

